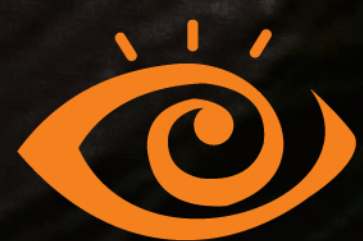


CATALOG

# WET LOOK

Keratin-Infused Wet Lashes for a Natural, Glossy Look

DESIGNED & MANUFACTURED BY :



**EYELASHESWORLD**

MANUFACTURER OF THE WORLD'S  
BEST FALSE EYELASHES

[WWW.EYELASHESWORLD.COM](http://WWW.EYELASHESWORLD.COM)

Feather lightweight



Perfect *Fit*™ lash band



Scan and  
Download

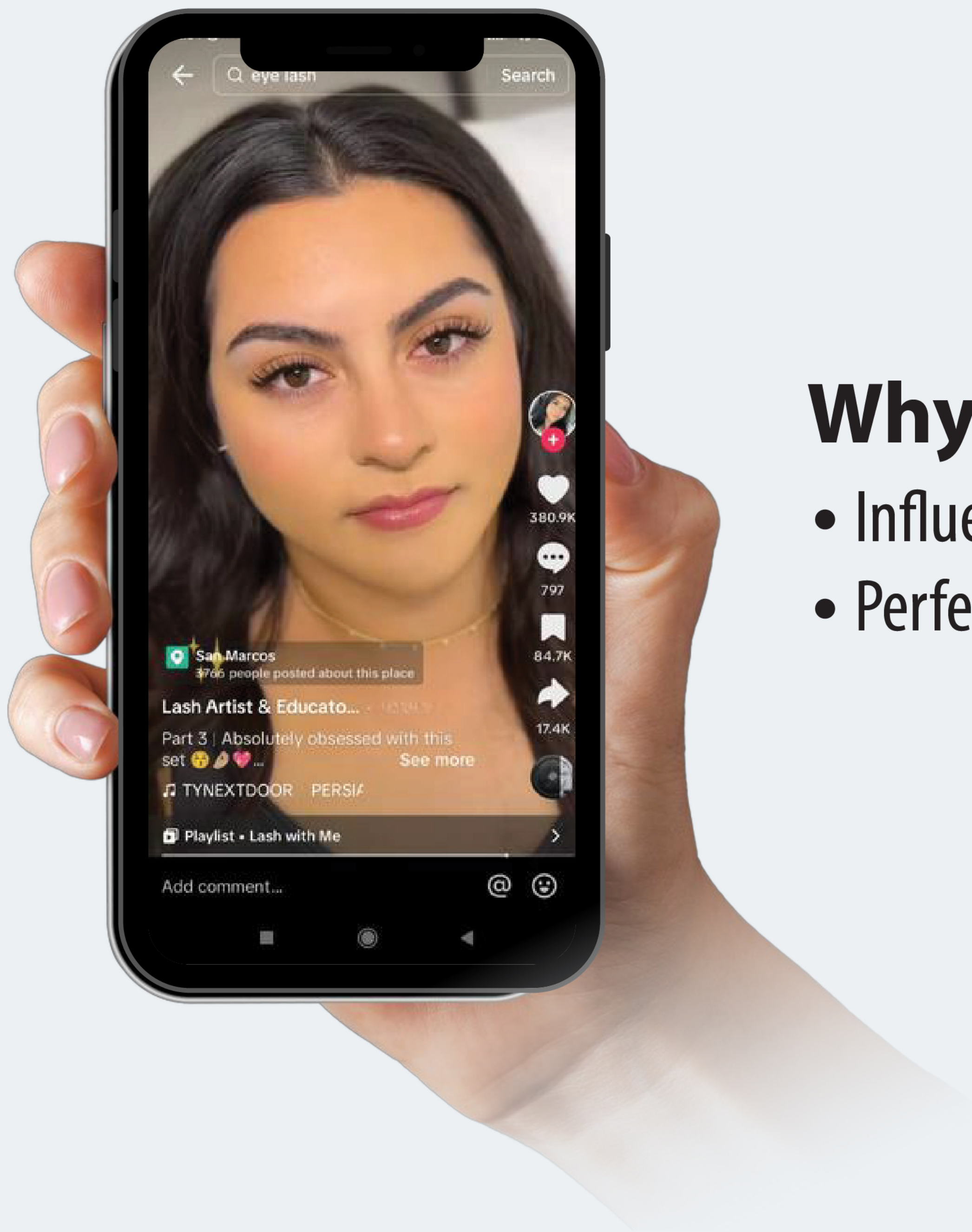




# What are Wet Look Lashes?

Wet look lashes are created essentially from using lighter lashes to create narrow, pretty much closed fans, to mimics the appearance of wet, glossy, and luscious lashes.

The light, fluttery feel of lashes with a spikey, textured volume look, this is a lash trend we're sure lots of your clients will love.



## Why Wet Lashes are Trending?

- Influencers and celebrities love the effortless, glossy look.
- Perfect for everything from runways to casual glam.



# Key Advantages of Our Wet Lashes

## No Sealant or Mascara Needed :

Get the perfect wet look with no extra products required.

## Keratin-Infused for Lash Care :

Nourish and strengthen natural lashes while wearing falsies.

## Innovative Design :

Clustered and spiked for added depth and dimension. High-gloss fibers reflect light perfectly.

## Easy Application :

Just remove, apply glue, and attach for instant glam.

## Long-Lasting and Reusable :

Durable fibers keep the wet look all day, and lashes are reusable with proper care.

## Natural Yet Bold :

Lightweight design ensures comfort, blending seamlessly with natural lashes.



Feather lightweight



Perfect *Fit*™ lash band



**EYELASHESWORLD**  
MANUFACTURER OF THE WORLD'S  
BEST FALSE EYELASHES



# DEW DROP



EYELASHESWORLD  
MANUFACTURER OF THE WORLD'S  
BEST FALSE EYELASHES



Feather lightweight 

Perfect Fit™ lash band 



# GLOSSY WAVES



EYELASHESWORLD  
MANUFACTURER OF THE WORLD'S  
BEST FALSE EYELASHES



Feather lightweight



Perfect Fit™ lash band





# OCEAN SHINE



**EYELASHESWORLD**  
MANUFACTURER OF THE WORLD'S  
BEST FALSE EYELASHES



Feather lightweight



Perfect Fit™ lash band





# AQUA SHIMMER



EYELASHESWORLD  
MANUFACTURER OF THE WORLD'S  
BEST FALSE EYELASHES



Feather lightweight



Perfect Fit™ lash band





# PEARL DRIP



EYELASHESWORLD  
MANUFACTURER OF THE WORLD'S  
BEST FALSE EYELASHES



Feather lightweight



Perfect Fit™ lash band





# TWILIGHT GLIMMER



EYELASHESWORLD  
MANUFACTURER OF THE WORLD'S  
BEST FALSE EYELASHES



Feather lightweight



Perfect *Fit*™ lash band





# WET WHISPER



EYELASHES WORLD  
MANUFACTURER OF THE WORLD'S  
BEST FALSE EYELASHES



Feather lightweight



Perfect *Fit*™ lash band











# EYELASHESWORLD

[WWW.EYELASHESWORLD.COM](http://WWW.EYELASHESWORLD.COM)

## **Bintang Mas Triyasa, pt**

Manufacturer of The World's Best False Eyelashes  
Desa Mewek RT 02 RW 03 Kec. Kalimanah, Purbalingga 53371  
Jawa Tengah, Indonesia

Phone : +62-281-896229  
Whatsapp : +62-812-2894-8408  
Email : [info@eyelashesworld.com](mailto:info@eyelashesworld.com)  
[www.eyelashesworld.com](http://www.eyelashesworld.com)

   [eyelashesworld.official](https://www.instagram.com/eyelashesworld.official)