

Josei *Lashes*

Unleash your Inner Manga

DESIGNED & MANUFACTURED BY :



EYELASHESWORLD
MANUFACTURER OF THE WORLD'S
BEST FALSE EYELASHES

WWW.EYELASHESWORLD.COM


Feather lightweight 

Perfect *Fit*™ lash band 

Scan and
Download



WWW.EYELASHESWORLD.COM



INSPIRED FROM MANGA LASHES THAT TOOK
OVER THE TREND, JOSEI LASHES IS A DELICATE
CANVAS OF EVERYDAY ARTISTRY. EACH LASH IS A
THOUGHTFUL STROKE, BLENDING THE ANIMATED CHARM OF MANGA
WITH NATURAL VIBRANT. THIS COLLECTION IS NOT JUST A SET
OF LASHES; IT'S A PAINTING FOR THE EYES, OFFERING A
PLAYFUL YET REFINED NARRATIVE THAT DANCES BETWEEN
WHIMSY AND NATURAL GRACE.

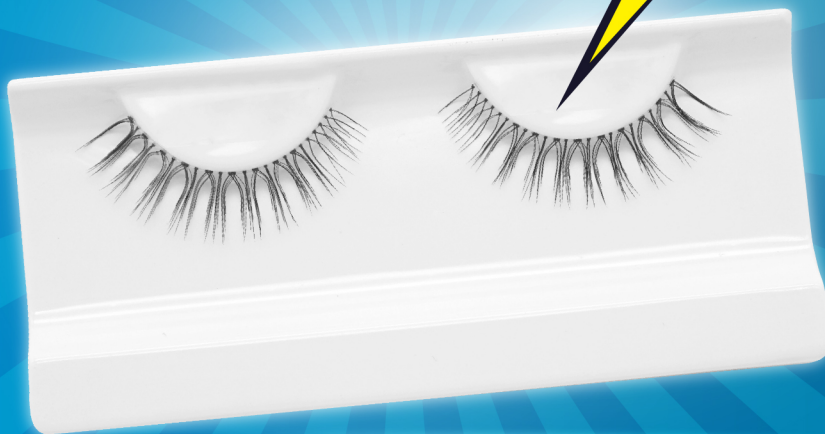


KAWAII



INSPIRED BY THE ADORABLE AND WHIMSICAL WORLD OF JAPANESE MANGA. THEIR DESIGN CAPTURES THE ESSENCE OF CUTENESS, WITH FLUTTERY, VOLUMINOUS LASHES THAT EVOKE THE WIDE-EYED CHARM OF MANGA CHARACTERS.

IMAGINE THESE LASHES AS A PLAYFUL ACCESSORY THAT INSTANTLY TRANSFORMS YOUR EYES INTO CAPTIVATING, DOE-LIKE FEATURES. WHETHER YOU'RE COSPLAYING OR SIMPLY EMBRACING YOUR INNER MANGA HEROINE, THE "KAWAII" LASHES ADD A TOUCH OF ENCHANTMENT TO ANY LOOK!



Feather lightweight



Perfect *Fit*™ lash band



MIRAI

MIRAI LASHES BLEND BOLD, SCULPTURAL AESTHETICS WITH DYNAMIC ASYMMETRY. EACH FILAMENT IS METICULOUSLY ARRANGED, CREATING A STRIKING TABLEAU. JUST LIKE BRUSH STROKES IN MODERNIST ART, EACH INDIVIDUAL LASH CONTRIBUTES TO THE OVERALL COMPOSITION. THESE LASHES INVITE YOU TO EMBRACE A VISIONARY APPROACH TO BEAUTY!



Feather lightweight



Perfect *Fit*™ lash band



HANA

INSPIRED BY THE DELICATE STROKES OF INK PAINTINGS, THESE LASHES EMBODY MINIMALIST ARTISTRY. EACH STRAND IS METICULOUSLY CRAFTED, WHISPER-THIN, AND PRECISELY SPACED, CREATING A SERENE AND UNCLUTTERED LANDSCAPE FOR YOUR EYES. THE UNIFORM LENGTH AND GENTLE UPWARD CURL EVOKE UNDERSTATED ELEGANCE, REMINISCENT OF A GRACEFUL FLOWER PETAL. WITH HANA, YOUR EYES WILL TELL A CAPTIVATING MANGA TALE.



AVAILABLE
ALSO IN
CLUSTER



Feather lightweight

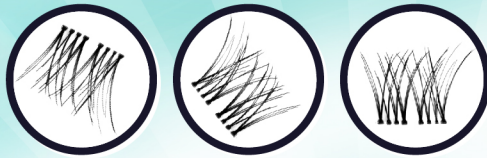


PerfectFit™ lash band



YUME

THESE LASHES FORM A BOLD ENSEMBLE, EACH CLUSTER A DRAMATIC FLOURISH OF BRISTLES THAT MIRRORS THE SPONTANEOUS STROKES OF EXPRESSIONIST ART. ARRANGED IN A DARING, STACCATO RHYTHM, THE CLUSTERS VARY IN DENSITY AND LENGTH, CREATING A TEXTURE RICH IN CONTRAST AND INTENSITY.



Feather lightweight



Perfect *Fit*™ lash band



KIREI

TRUE TO ITS NAME, KIREI LASHES ARE ALL ABOUT ENHANCING YOUR NATURAL BEAUTY. THESE ELEGANT LASHES ARE IDEAL FOR ANY OCCASION, ADDING A TOUCH OF SOPHISTICATION TO YOUR EVERYDAY STYLE.



Feather lightweight 

Perfect *Fit*™ lash band 

Josei Lashes



Feather lightweight



Perfect Fit™ lash band





EYELASHES WORLD

WWW.EYELASHESWORLD.COM

Bintang Mas Triyasa, pt

Manufacturer of The World's Best False Eyelashes
Desa Mewek RT 02 RW 03 Kec. Kalimanah, Purbalingga 53371
Jawa Tengah, Indonesia

Phone : +62-281-896229
Whatsapp : +62-812-2894-8408
Email : info@eyelashesworld.com
www.eyelashesworld.com

   [eyelashesworld.official](https://www.instagram.com/eyelashesworld.official)