

# COLOR ME

## A SEASON


DESIGNED & MANUFACTURED BY :



**EYELASHESWORLD**  
MANUFACTURER OF THE WORLD'S  
BEST FALSE EYELASHES

[WWW.EYELASHESWORLD.COM](http://WWW.EYELASHESWORLD.COM)

Feather lightweight 

Perfect Fit™ lash band 



## *Our Quality Philosophy*

Our New Product Development highlights the importance of color for lashes branding. Season color lashes chosen from the four seasons : Summer, Autumn, Winter, Spring. Season color lashes are specially designed to stand out when exposed to light. Nevertheless, the lashes still look natural and fabulous under standard lighting. This results in perfect radiant looks from all corners in all occasions.

**Feather** lightweight

Sheer, feathery and weightless for total comfort.

**Perfect *Fit*™** lash band

Easy to apply and perfectly fitted to eyelid shapes.

*Adjustable color volume*

Color portion can be adjusted. To look more radiant, the vibrant color can be added.

*Customized styles*

Styles are available for customization from wispy styles, dramatic, or even multi-layered.

*Mixed radiant color*

Lashes can be mixed from several colors, depending on occasions and preferences.







# Summer Collection

Everything magical happens between the months of June and August. When the cold months end and the sunshine finally gets consistent, there's nothing better than heading somewhere near the water with a good beach read and nice hang out places. Summer lashes gives ranges of vibrant color lashes perfect for summer outfits and occasions.

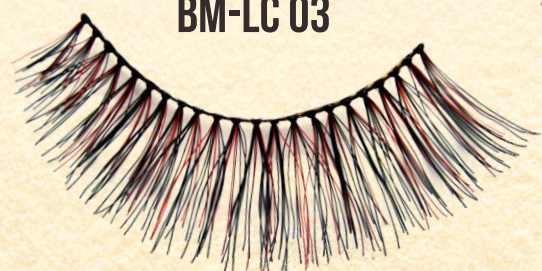
**BM-LC 01**



**BM-LC 02**



**BM-LC 03**



**BM-LC 01**



**BM-LC 02**



**BM-LC 03**



Feather lightweight

Perfect Fit™ lash band









# Autumn Collection

*Cherish everything that comes with the arrival of autumn including the stunning scenery, time spent with friends and family, and more. Autumn color lashes inspired by the change color of tree leaves from green leaves into many various shades of red.*



**BM-LC 02**



**BM-LC 01**



**BM-LC 03**



**BM-LC 01**



**BM-LC 02**



**BM-LC 03**



Feather lightweight



Perfect Fit™ lash band









# Winter Collection

Cold winter breeze greets people with bliss. Winter is the blissful time of the year where Christmas and New Year is celebrated. Winter color lashes collections are inspired by the chillness of the air and the warmth of family reunion during the most wonderful moments of the year.

**BM-LC 01**



**BM-LC 02**



**BM-LC 03**



**BM-LC 01**



**BM-LC 02**



**BM-LC 03**



Feather lightweight



Perfect Fit™ lash band









# Spring Collection

Because there's nothing more lovely than spring in the country, we've collected the best spring color lashes to glam the season of fresh flowers, green grass and sunshine.



Feather lightweight 

Perfect Fit™ lash band 





***BINTANG MAS TRIYASA, PT***

*Manufacturer of The World's Best False Eyelashes*

*Desa Mewek RT 02 - RW 03*

*Kec. Kalimanah, Purbalingga 53371*

*Jawa Tengah, Indonesia*

*Phone : +62-281-896229*

*Email : [yohanesferry@eyelashesworld.com](mailto:yohanesferry@eyelashesworld.com)*

*[arnoldteng@eyelashesworld.com](mailto:arnoldteng@eyelashesworld.com)*